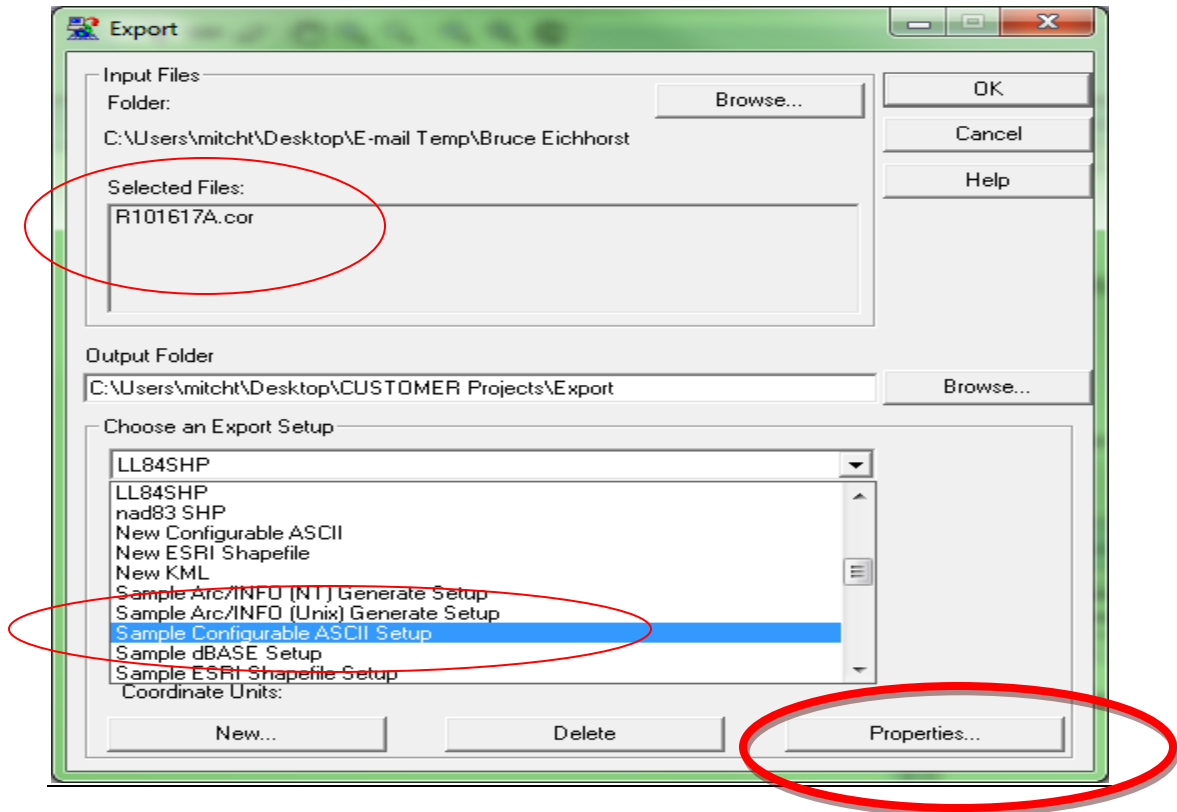


Export to XLS or CSV

1. After post processing your data go to Utilities > Export
2. Make sure your data is selected; then choose the Sample Configurable ASCII export setup then Click Properties:



3. Check the following Tabs and their Settings:

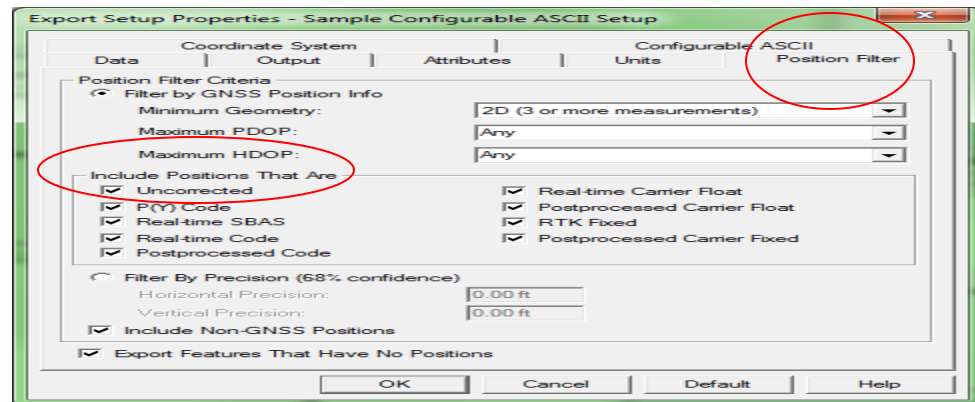
Data: Export All Features

Output: Combine all input files and output to an Auto-generated subfolder

Attributes: “freebees” check any you want

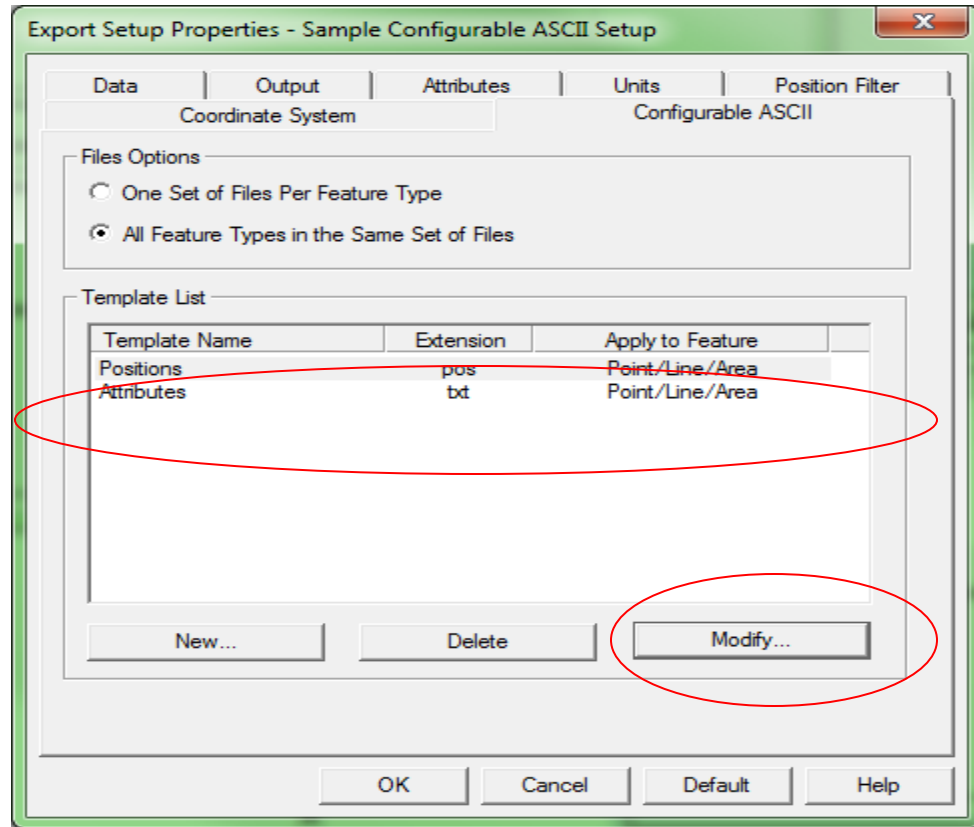
Units: Set the units you want your XLS/CSV to be in

Position Filter: Check the ”Uncorrected” box

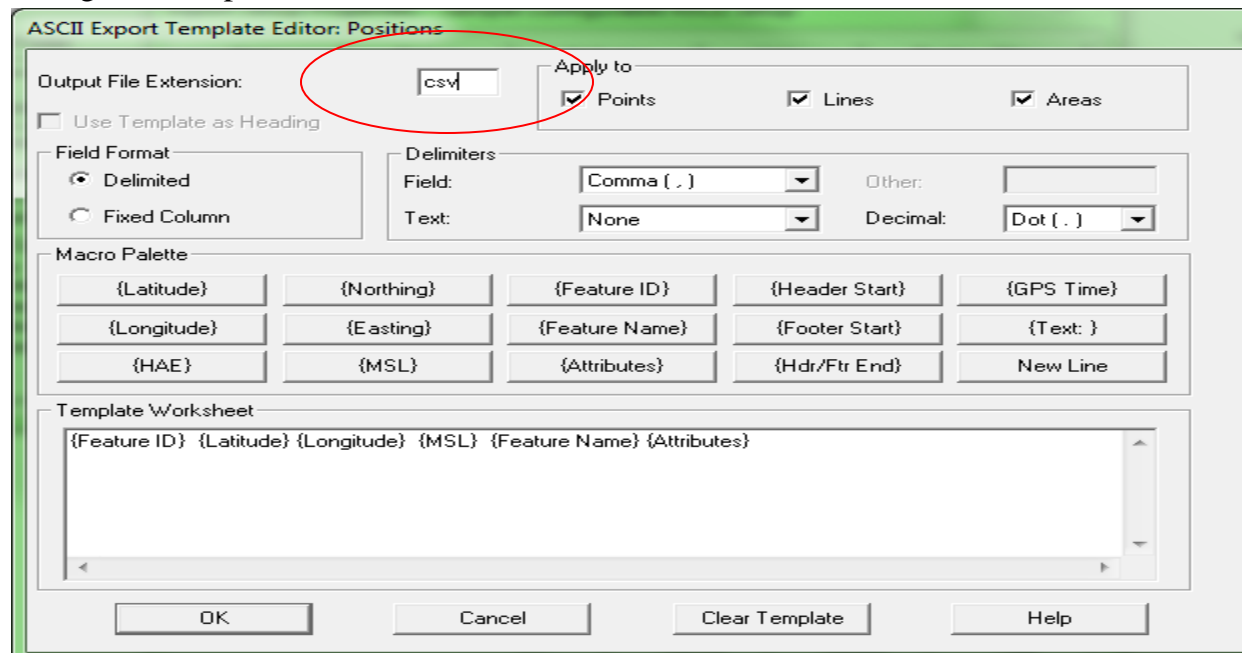


Coordinate System: Set the Coordinate system you want your exported data to be in

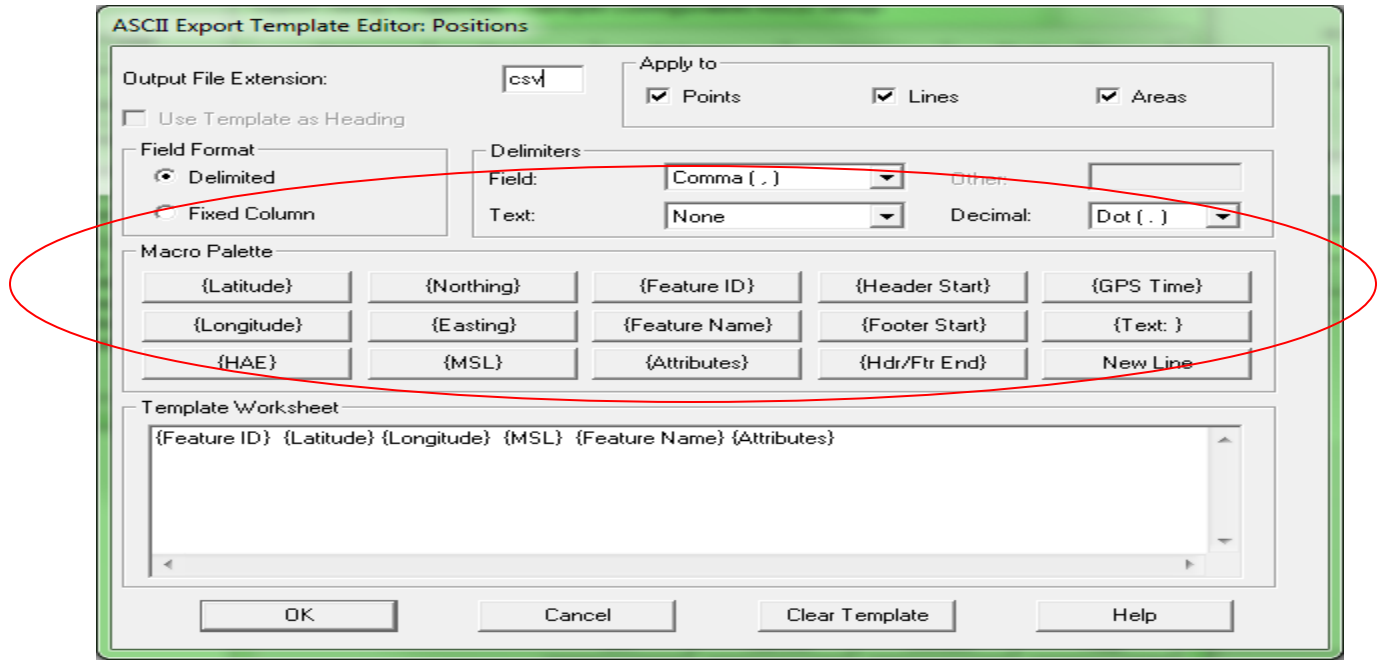
Configurable ASCII: Highlight Positions and Click Modify



Change the Output File Extension to xls or csv



Macro Palette: Build your own spread sheet



Coordinates:

If your coordinate system is Lat Long WGS 1984 only Latitude and Longitude can be Exported

If your coordinate system is a State Plane or a UTM then Northing and Easting's can be exported

Elevation:

HAE = Height Above Ellipsoid

MSL = Mean Sea Level

The rest should be pretty straight forward, don't forget your attributes.