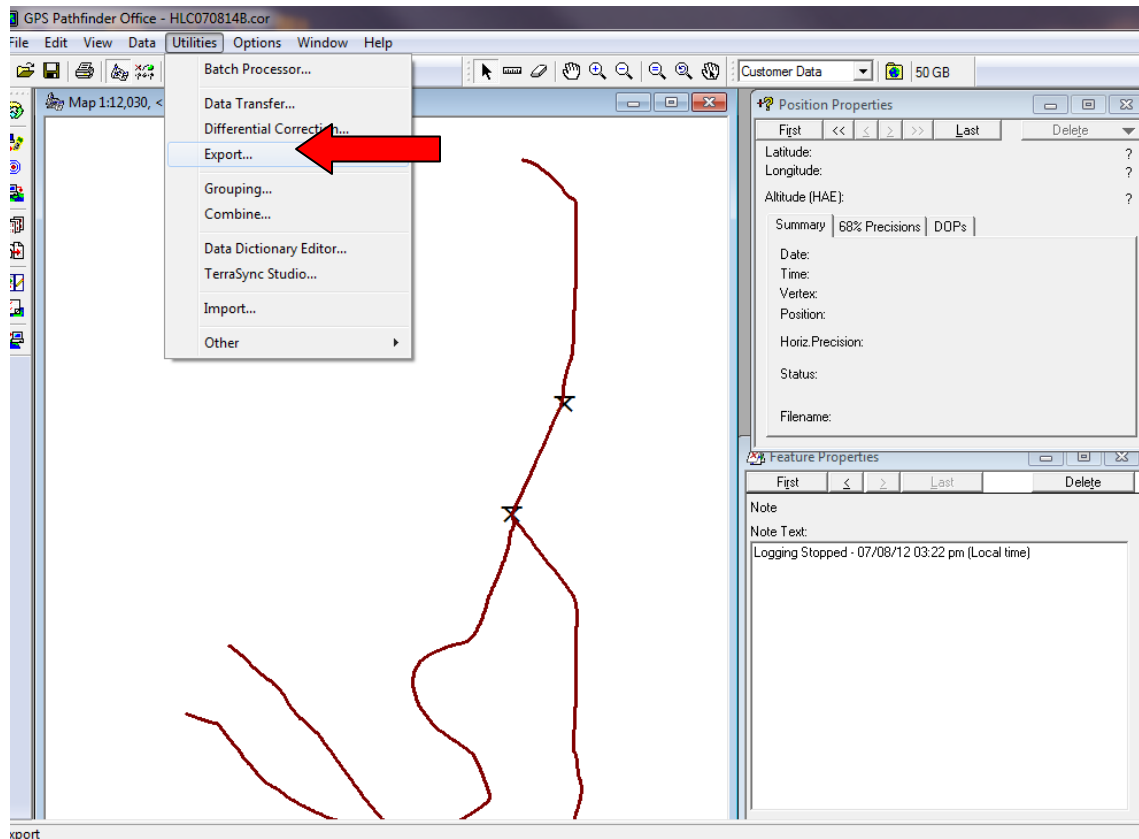


## Exporting TerraSync Data to ESRI Shape file format (.SHP)

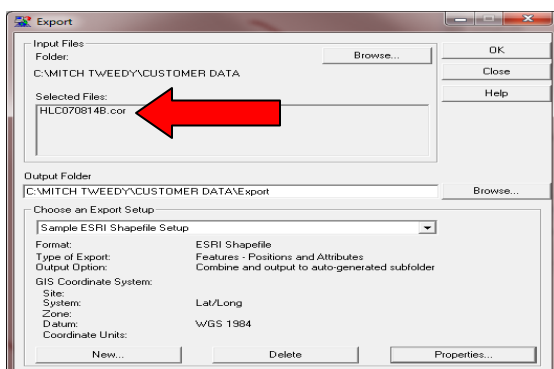
After Collecting data with Trimble TerraSync software, use the data transfer utility to bring the data off the data collector (Utilities > Data Transfer).

Open the data file(s) and differentially correct the data (utilities > differential correction) if you want to improve the accuracy.

Open the corrected data (.cor) and then Click Utilities > Export

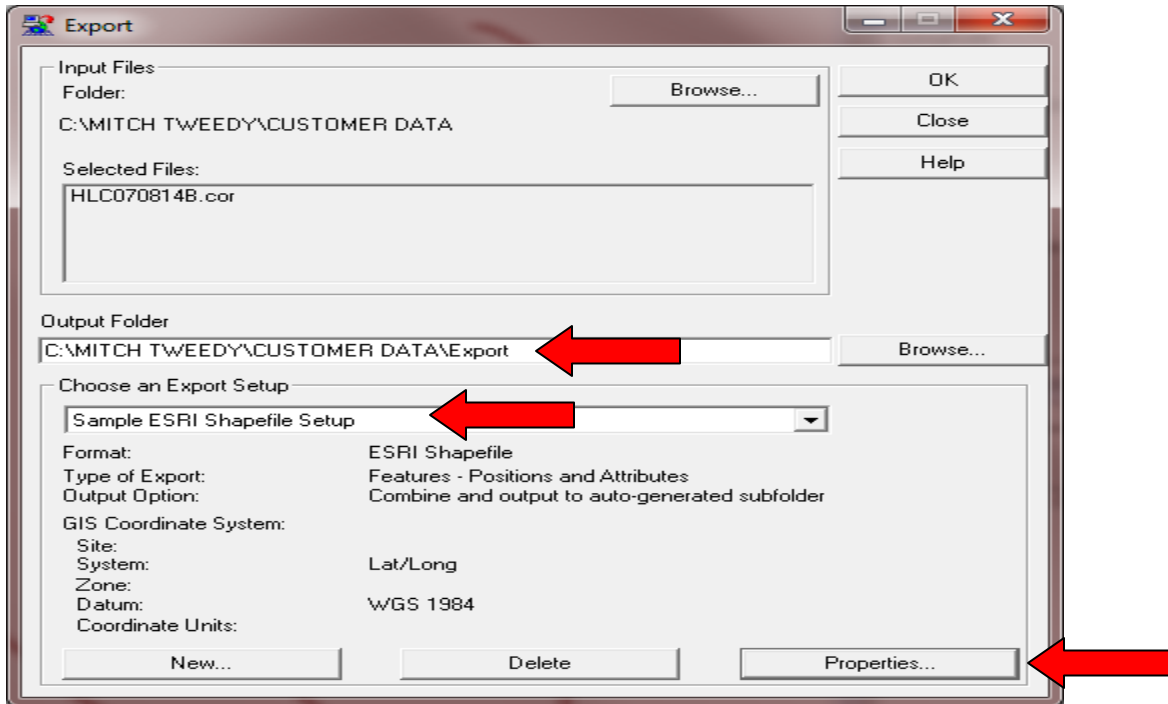


Make sure you are exporting the right data

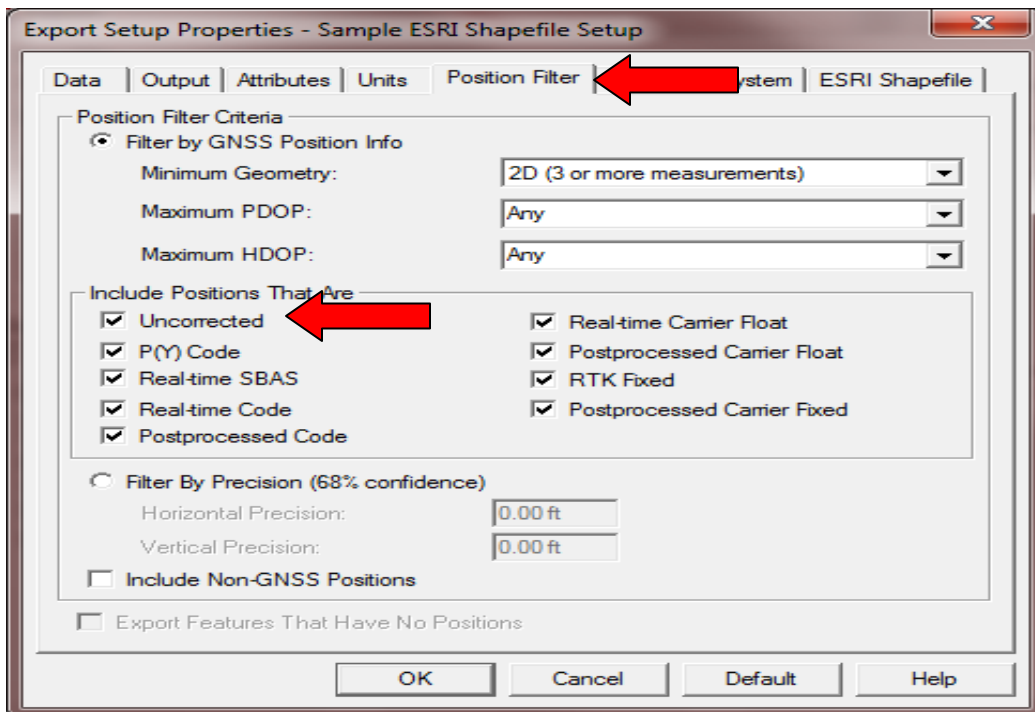


Select where you want your data to be exported to ( Output Folder)

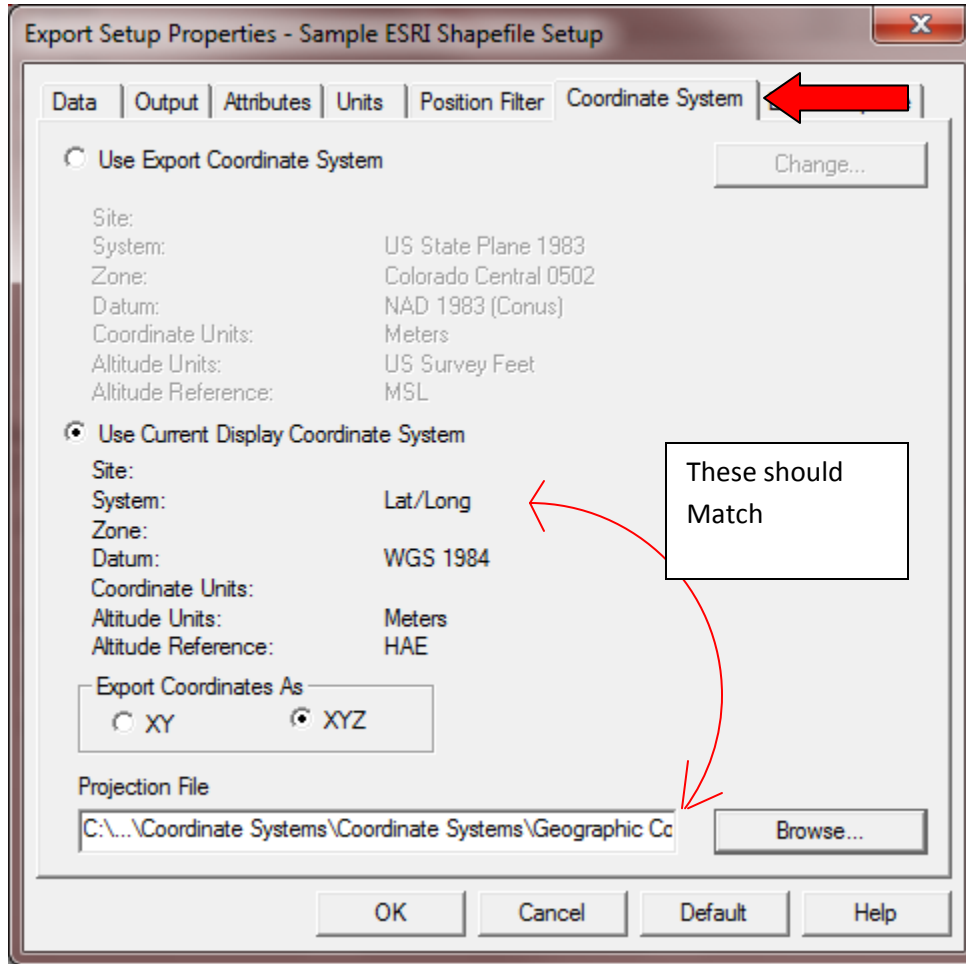
Select the **Sample ESRI Shape File Setup** then click properties:



Click on the Position Filter Tab and Make sure the “**Uncorrected**” box is checked:



Click on the Coordinate System Tab and select the coordinate system that you want your shape file to have, then brows to the proper Projection File:



Note – The projection file should match the Export Coordinate system (pay special attention to the coordinate units)

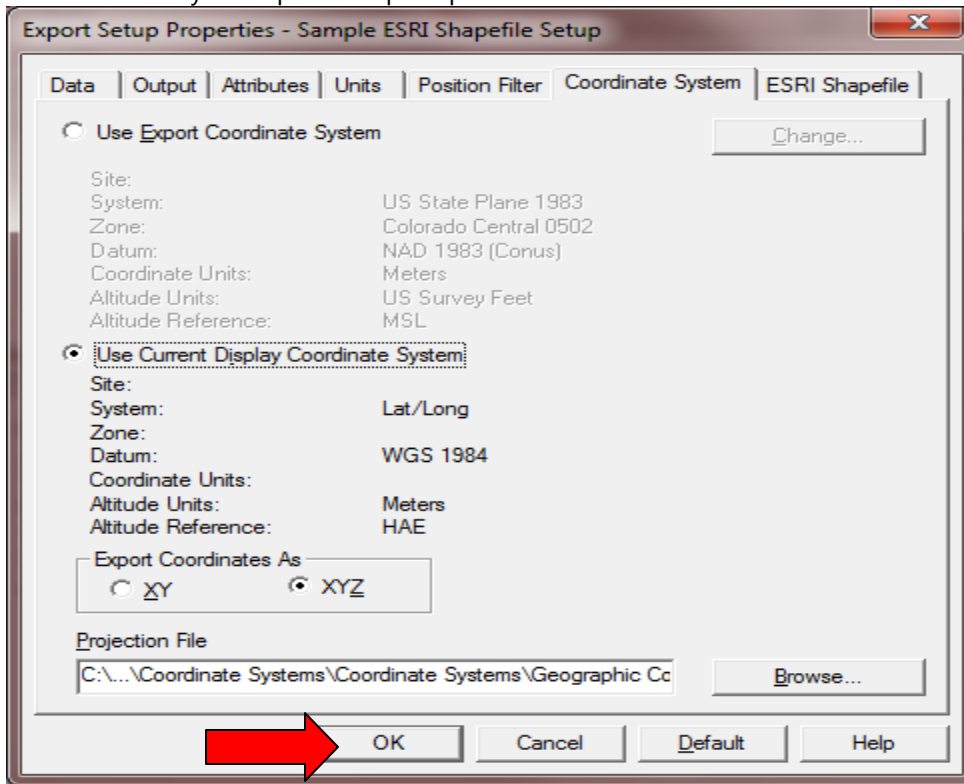
If you have ESRI ArcGIS desktop 9.3 or 10.0 installed then you can find projection files in these locations:

64 BIT computer: C:\Program Files (x86)\ArcGIS\Desktop10.0\Coordinate Systems

32 bit computer: C:\Program Files\ArcGIS\Desktop10.0\Coordinate Systems

If you have ArcGIS 10.1 or do not have ArcGIS, then contact CompassTools Inc. support:  
[support@compasstoolsinc.com](mailto:support@compasstoolsinc.com)

Click ok to save your Export Setup Properties



Click ok to export your Trimble Data to a Shape file

