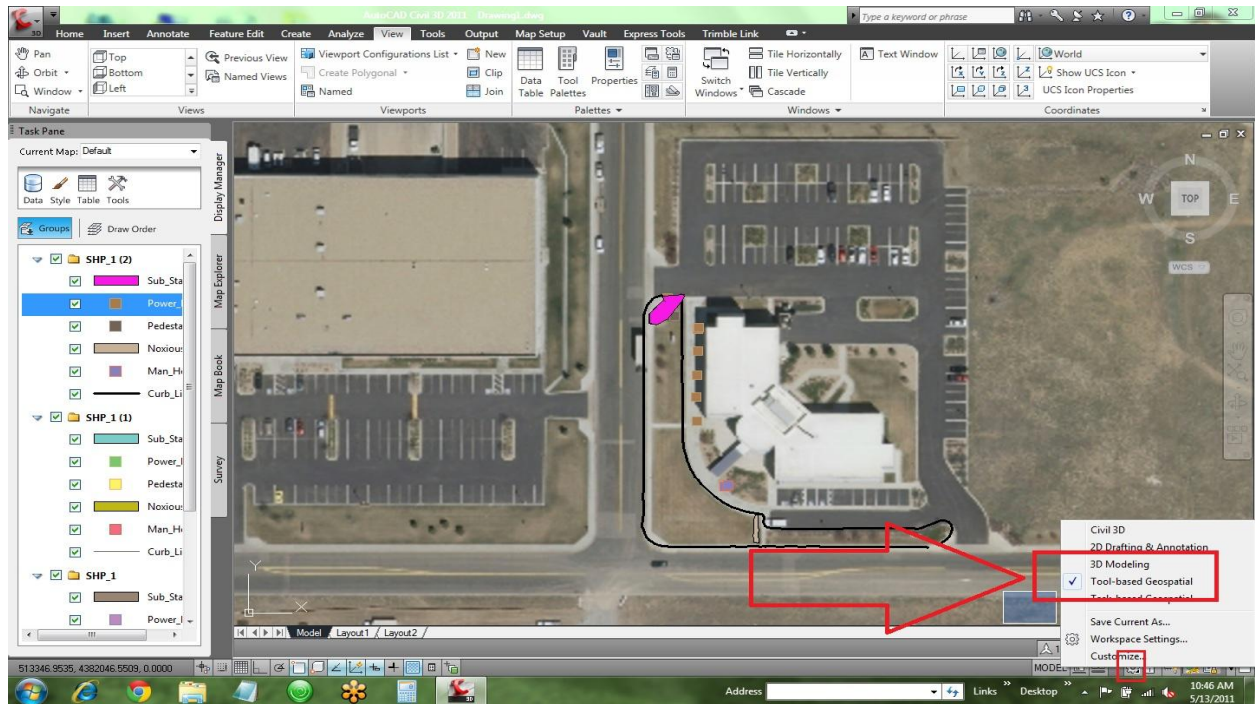
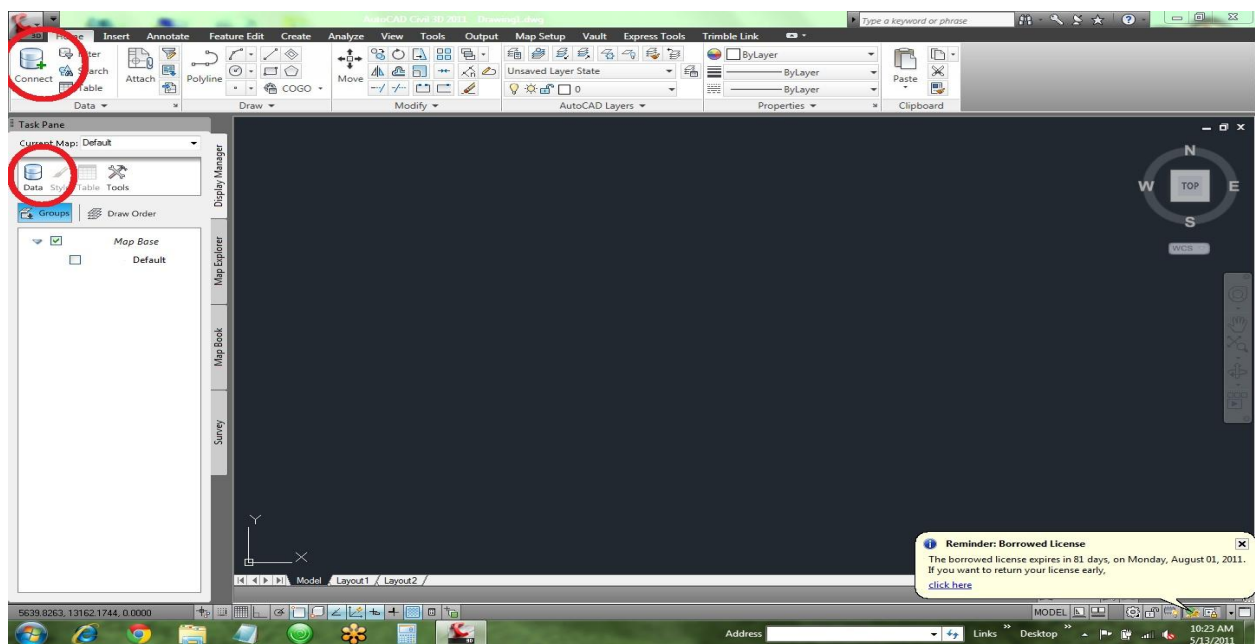


Adding Shape Files into AutoCad Map 3D or Civil 3D

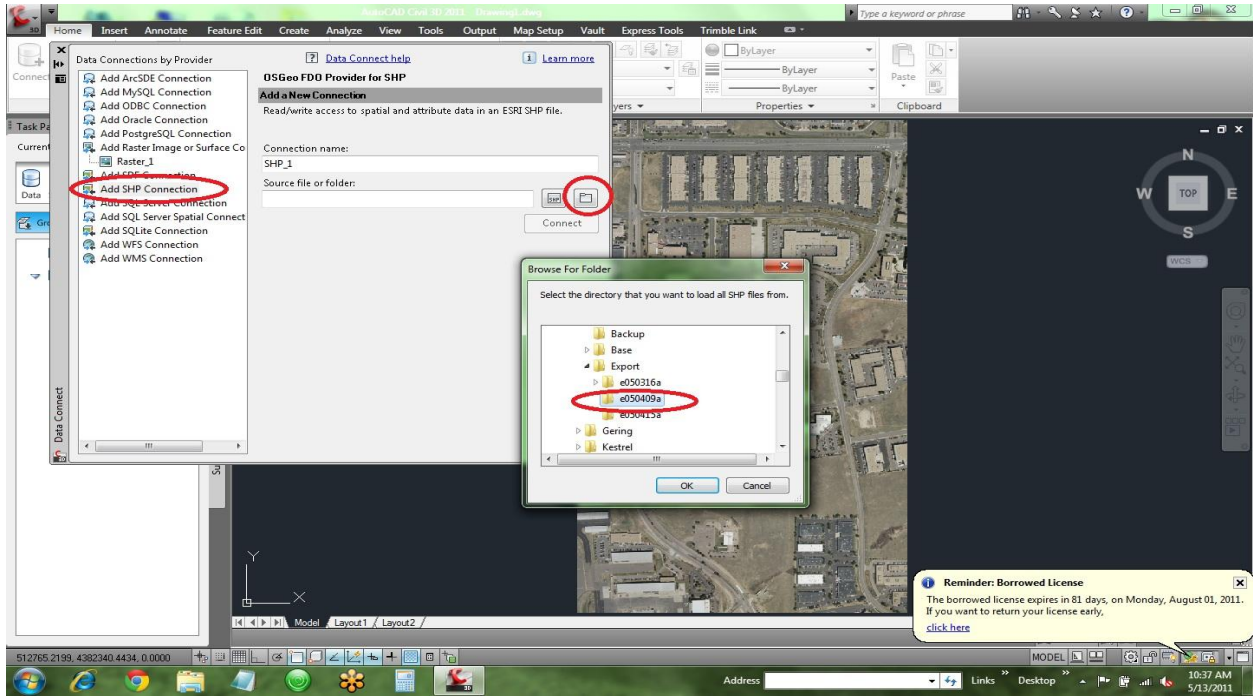
Step 1: Find the Tool Based Geospatial Tool Bar



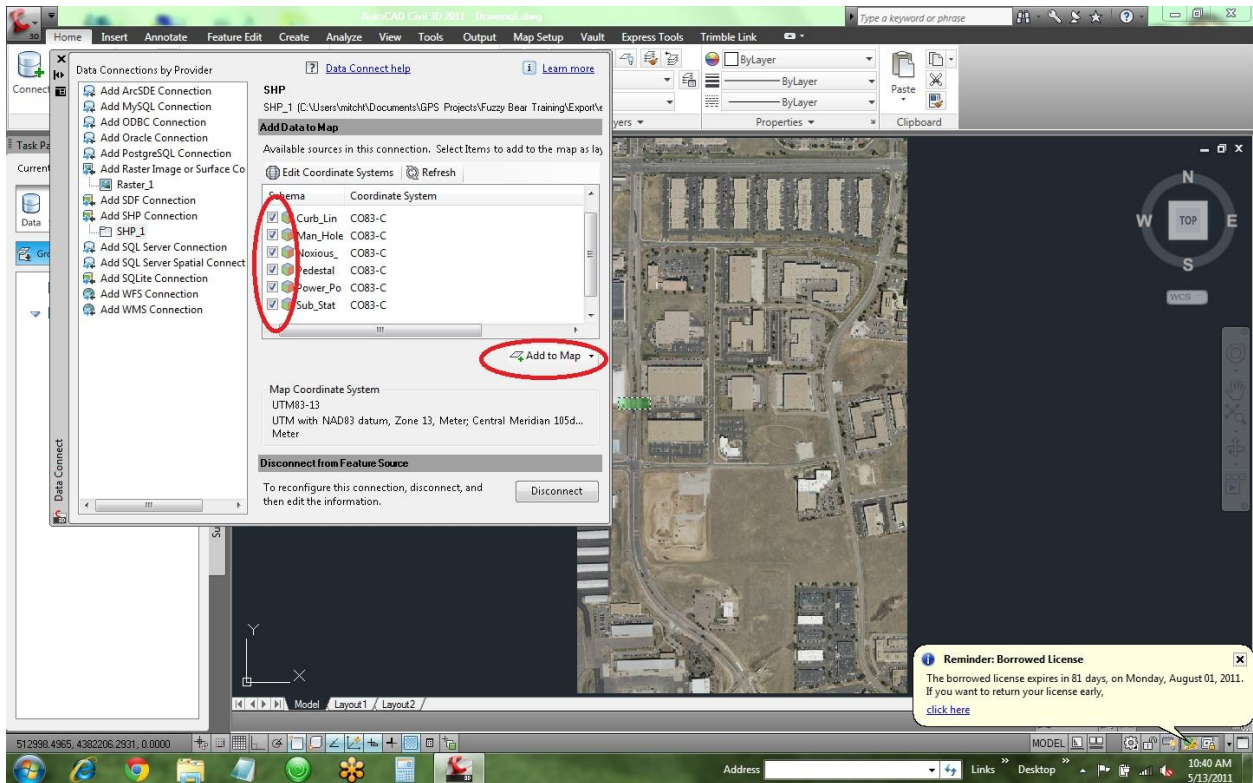
Step 2: Click on Connect to Data



Step 3: Add shp Connection and Browse to Shape files



Step 4: Check the Shape files you want and click “Add to Map”:



All vector data and table data are now added to the map:

The screenshot shows the AutoCAD Civil 3D 2011 interface. The main map area displays an aerial view with a green circle highlighting a specific feature. The Explorer on the left shows the project structure, with 'SHP_1 (2)' and 'SHP_1 (1)' layers. The 'Show Data Table' option is highlighted in the Explorer. The Data Table is displayed in the bottom right corner, showing a table with columns: Class, Collection, Mortality, Install_Da, Comment, Corr_Type, Rcvr_Type, GPS_Date, and Prec. The table contains several rows of data, with the first row circled in red.

Class	Collection	Mortality	Install_Da	Comment	Corr_Type	Rcvr_Type	GPS_Date	Prec
1-3	5/3/2011 12:00:...	5/21/2011 12:00:...	4/18/2011 12:00:...	bollard	Postprocessed ...	GeoXH 2005	5/3/2011 12:00:...	0.8
1-3	5/3/2011 12:00:...	5/21/2011 12:00:...	5/15/2011 12:00:...	bad	Postprocessed ...	GeoXH 2005	5/3/2011 12:00:...	2.1
1-3	5/3/2011 12:00:...	5/14/2011 12:00:...	4/6/2011 12:00:...	<Null>	Postprocessed ...	GeoXH 2005	5/3/2011 12:00:...	1.1
1-3	5/3/2011 12:00:...	5/20/2011 12:00:...	4/15/2011 12:00:...	<Null>	Postprocessed ...	GeoXH 2005	5/3/2011 12:00:...	1
4-5	5/3/2011 12:00:...	5/28/2011 12:00:...	4/14/2011 12:00:...	<Null>	Postprocessed ...	GeoXH 2005	5/3/2011 12:00:...	0.7
6-7	5/3/2011 12:00:...	5/28/2011 12:00:...	<Null>	<Null>	Postprocessed ...	GeoXH 2005	5/3/2011 12:00:...	2.1
6-7	5/3/2011 12:00:...	5/28/2011 12:00:...	4/5/2011 12:00:...	<Null>	Postprocessed ...	GeoXH 2005	5/3/2011 12:00:...	0.8