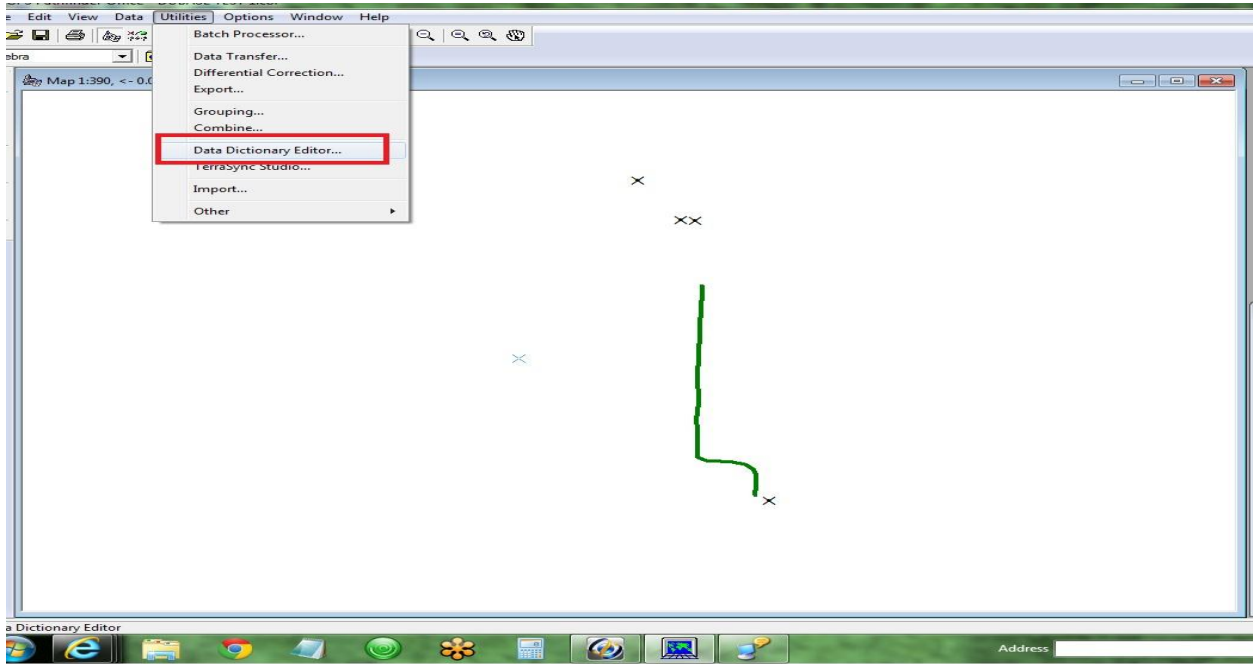
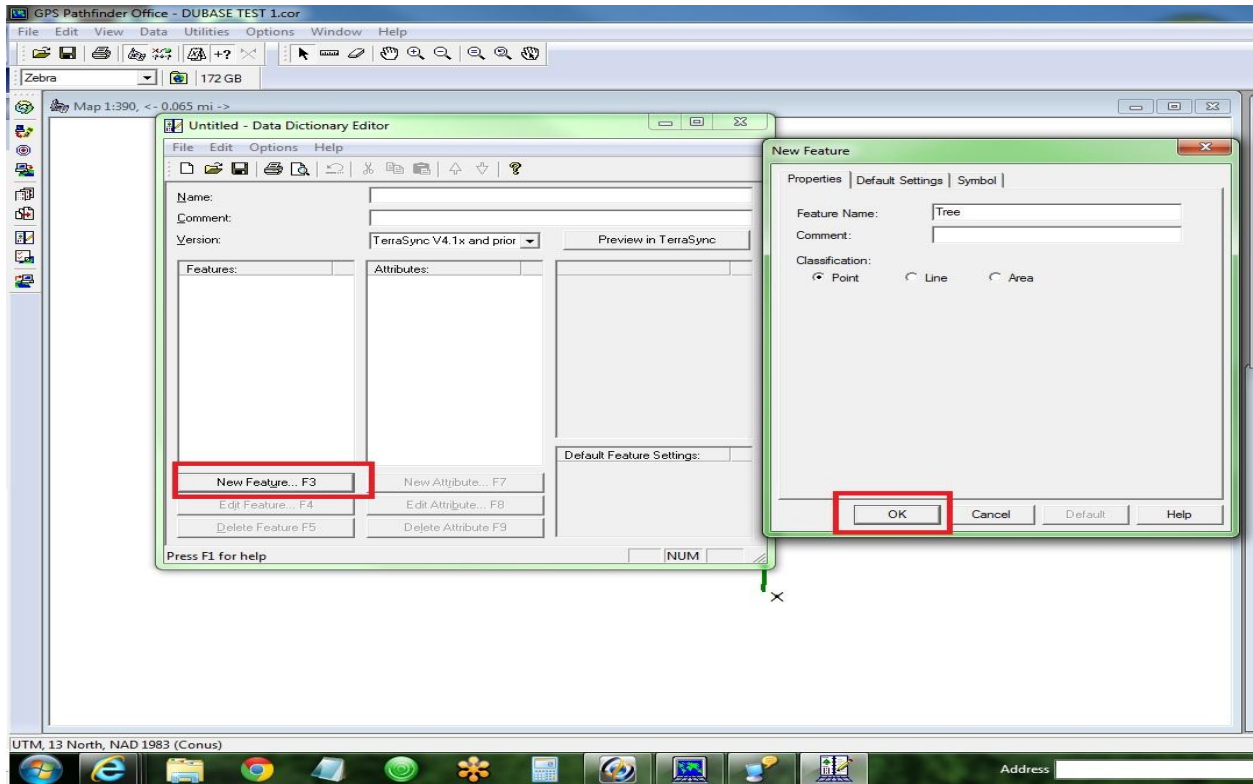


Photo Attribute in TerraSync

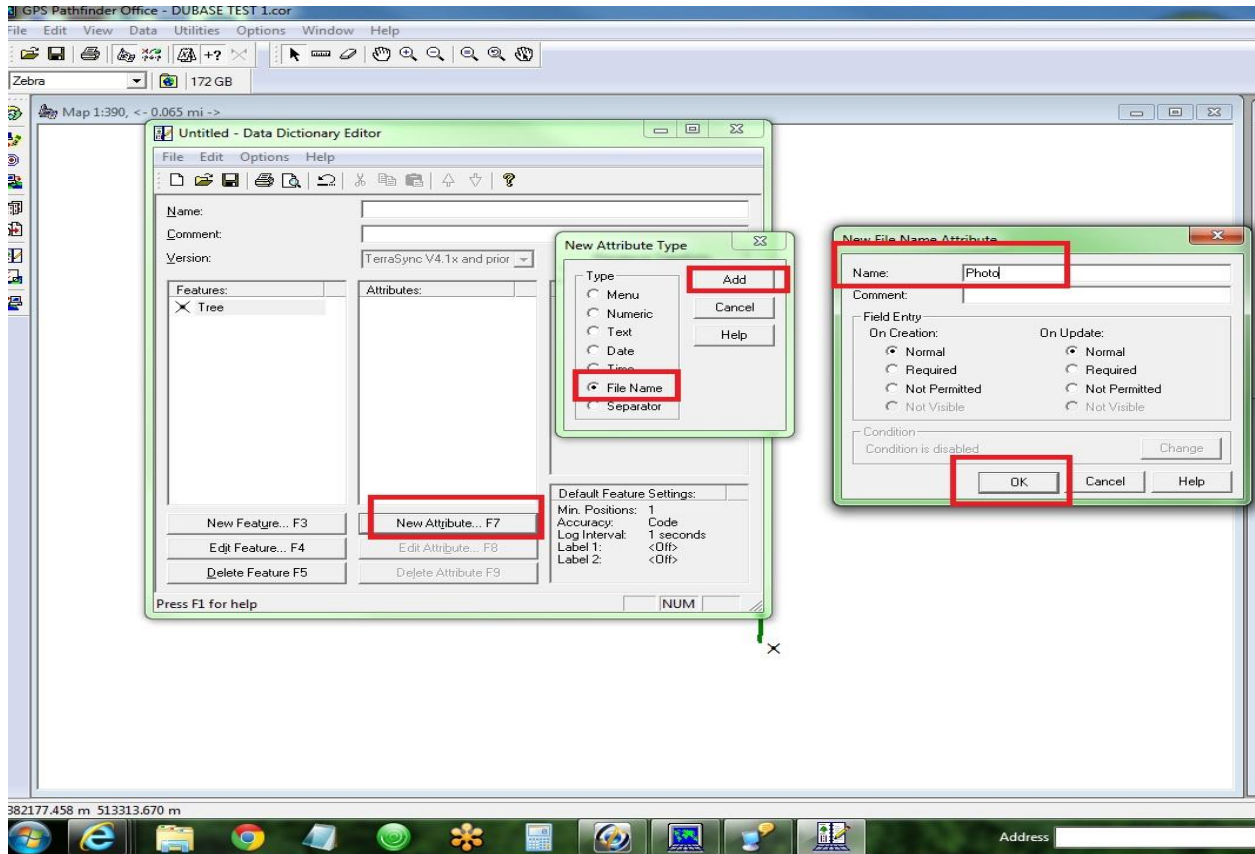
Open the Data Dictionary Editor:



Create a new feature and click OK:



Click new Attribute and select “File Name” under Type:



Click OK to save the Photo Attribute. Save the Data Dictionary and then use the Data Transfer Utility to Send the new Data Dictionary to the device.

On Trimble devices with onboard cameras (like the Geo6000/Nomad/Juno/Yuma) this new Photo attribute will show up with a camera Icon. To attach the Photo to the point use this camera Icon to take pictures. Trimble devices without a camera will have a browse button.

