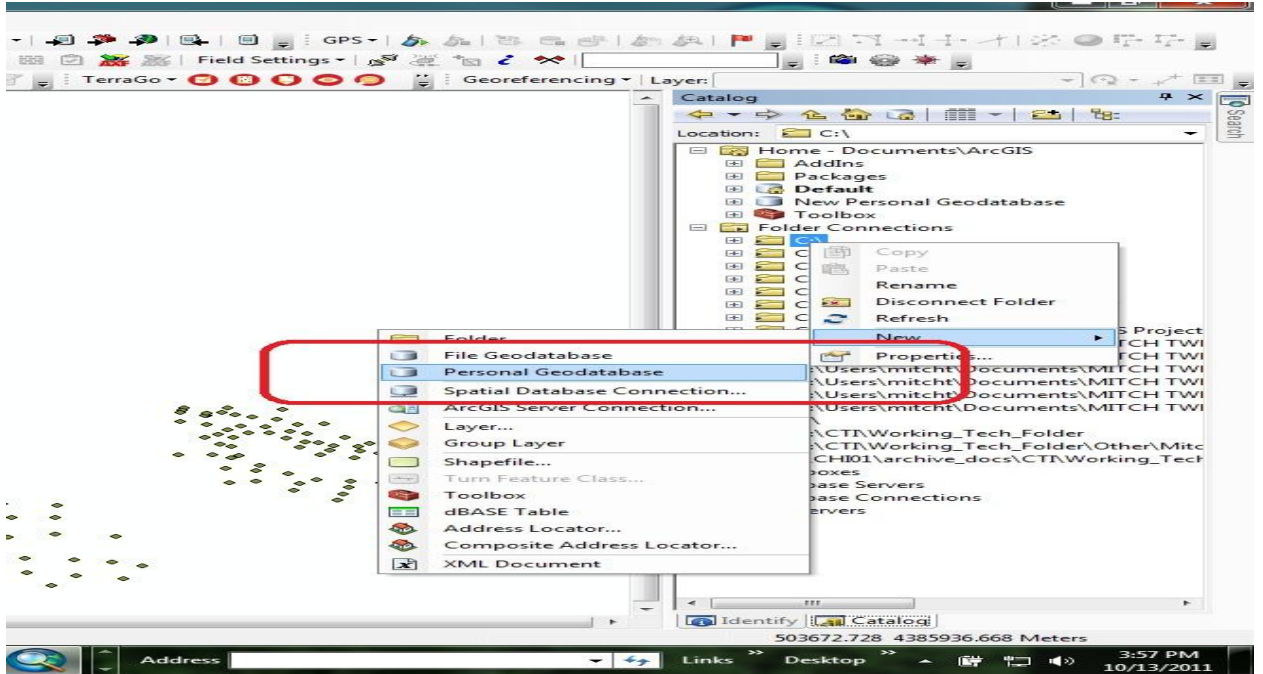
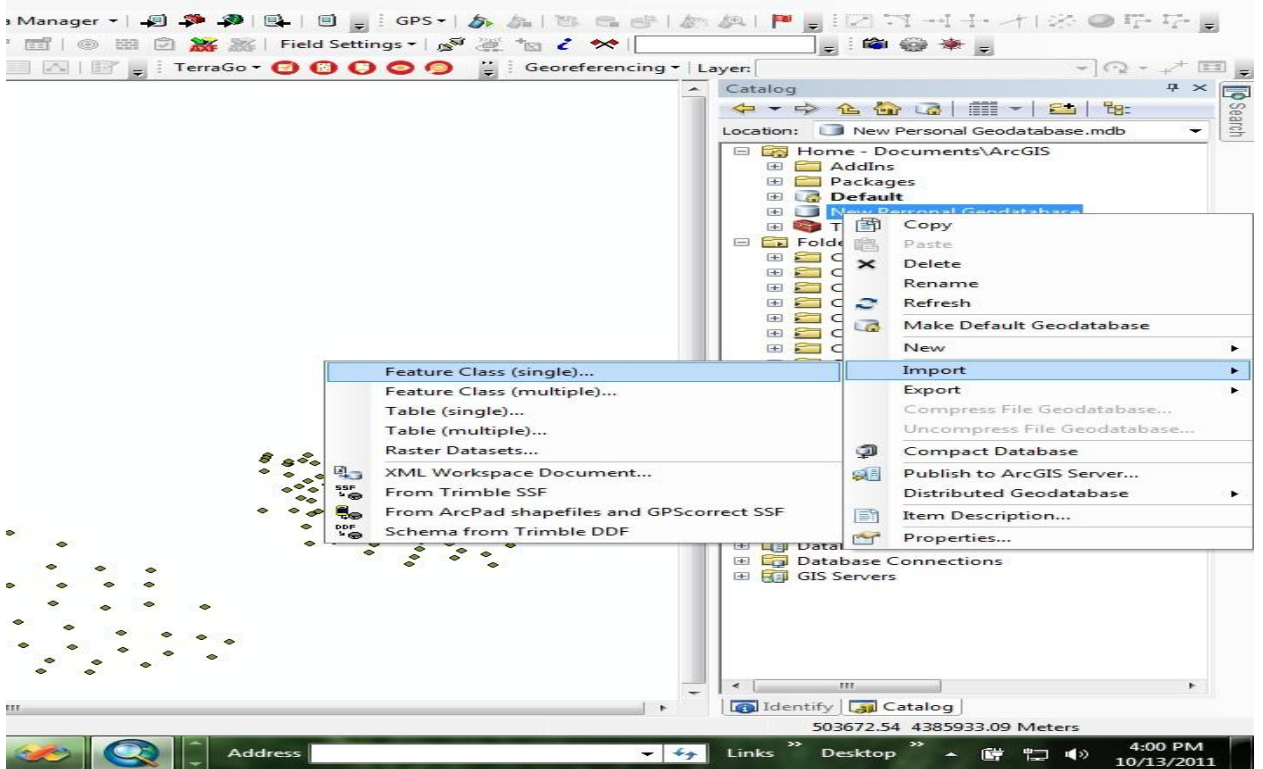


Elevations in ArcMap

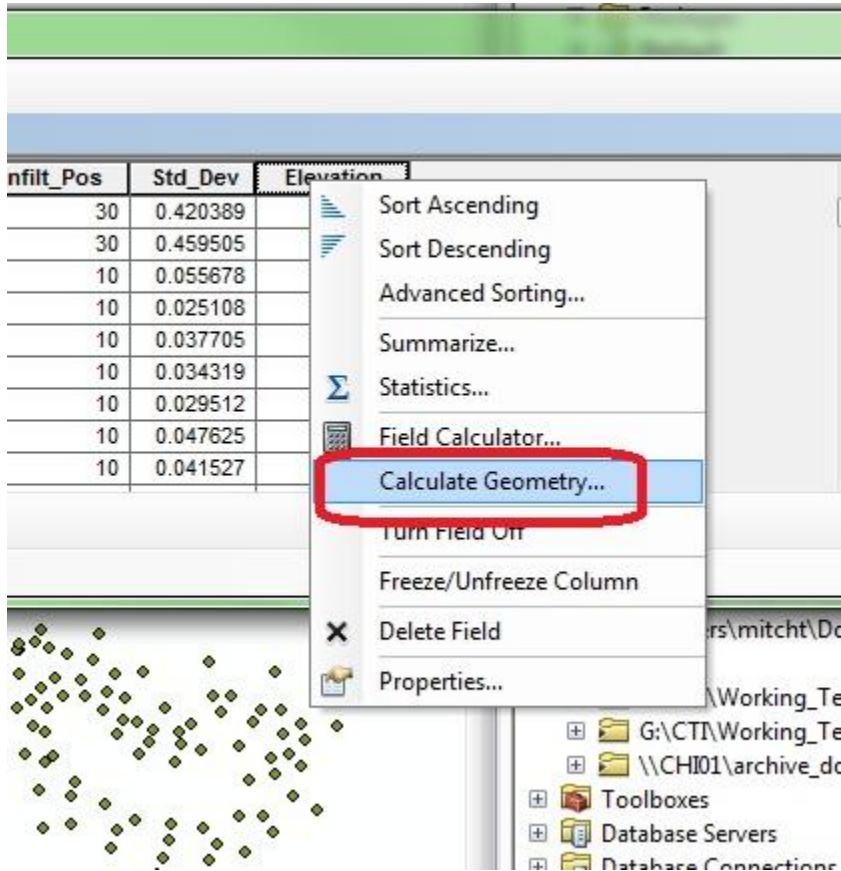
1. Data must live in a geodatabase. Using ArcCatalog right click and select new personal geodatabase (does not matter where the data base lives)



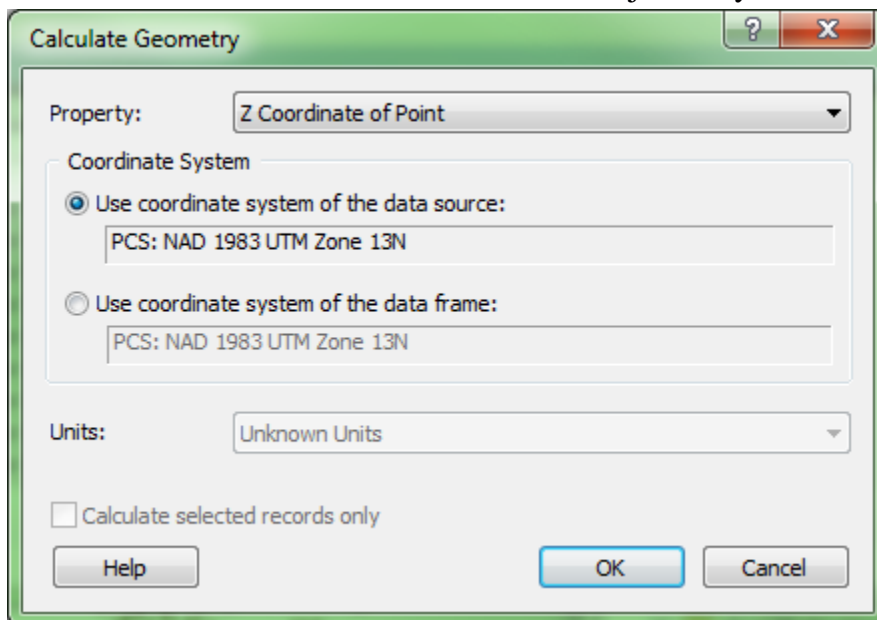
2. Right Click on Personal Geodatabase and Import your Data to the GDB:



5. Right Click on the Header of the new field and Click on “Calculate Geometry”



6. Choose “Z Coordinate of Point”, set the Projection you want then click “OK”



Your elevation defaults to the Vertical Coordinate System of the Data Frame

Table

points

OBJECTID *	Shape *	Comment	Max_PDOP	Corr_Type	Rcvr_Type	GPS_Date	Feat_Name	Datafile	Unfilt_Pos	Std_Dev	Elevation
1	Point ZM	well	1.8	Postprocessed Carrier Float	GeoXH 2008-3000	10/7/2011	Point_ge	WELL_1.cor	30	0.420389	1636
2	Point ZM	stream	5.2	Postprocessed Carrier Float	GeoXH 2008-3000	10/7/2011	Point_ge	WELL_1.cor	30	0.459505	1629
3	Point ZM		2.5	Postprocessed Carrier Float	GeoXH 2008-3000	10/7/2011	Point_ge	POND_3_1.cor	10	0.055676	1638
4	Point ZM		2.5	Postprocessed Carrier Float	GeoXH 2008-3000	10/7/2011	Point_ge	POND_3_1.cor	10	0.025108	1638
5	Point ZM		2.5	Postprocessed Carrier Float	GeoXH 2008-3000	10/7/2011	Point_ge	POND_3_1.cor	10	0.037705	1638
6	Point ZM		2.5	Postprocessed Carrier Float	GeoXH 2008-3000	10/7/2011	Point_ge	POND_3_1.cor	10	0.034319	1638
7	Point ZM		2.5	Postprocessed Carrier Float	GeoXH 2008-3000	10/7/2011	Point_ge	POND_3_1.cor	10	0.029512	1638
8	Point ZM		2.5	Postprocessed Carrier Float	GeoXH 2008-3000	10/7/2011	Point_ge	POND_3_1.cor	10	0.047625	1638
9	Point ZM		2.5	Postprocessed Carrier Float	GeoXH 2008-3000	10/7/2011	Point_ge	POND_3_1.cor	10	0.041527	1638
10	Point ZM		2.5	Postprocessed Carrier Float	GeoXH 2008-3000	10/7/2011	Point_ge	POND_3_1.cor	10	0.03438	1638
11	Point ZM		2.5	Postprocessed Carrier Float	GeoXH 2008-3000	10/7/2011	Point_ge	POND_3_1.cor	10	0.045048	1638

0 (0 out of 214 Selected)

points

Elevation in meters